



pKT Digital cylinder G3

The pKT digital cylinder G3 is installed instead of the usual profile cylinder. It is equipped with a MIFARE® DESFire® EV1 or a LEGIC advant® reader. It reads the access rights that have been written onto an access credential by a master reader with an online connection to the central database, and grants or denies access accordingly. These access rights are made up of several time periods whose overall validity can be set as required. If the credential is not presented to a master reader for updating before this period has elapsed, the credential and therefore the cardholder automatically loses all access rights to the offline components.

As the access administration is fully integrated in the online system, the access rights of the autonomous offline units are handled easily and comfortably throughout the whole system. There is no requirement for individual programming of the unit through a mobile programming unit for example.

Depending on the system configuration, up to the last 160 transactions are saved on the device. This event data can automatically be written back to the employee credential at the time of the transaction and then transmitted to the central database the next time it is presented to a master reader. Additionally, the data can be read out from the offline component at any time using a special transactions transfer card and transmitted to the central database through a master reader.

The electronic knob module contains the complete read and control electronics as well as the power supply, using standard CR2 batteries. Installation and battery change can be done easily using the special, system-initialised card and tools.

Features

- ▶ Credential used as information carrier, e.g. battery status, automatic booking transfer, blacklist
- ▶ The electronic knob module can be installed on both sides, from an overall length of 70 mm
- ▶ Individual access rights per cardholder
- ▶ No authorisations are stored in the cylinder
- ▶ Automatic, time-controlled unlocking and locking
- ▶ Toggle mode option (open with first booking, close with next, open with next, etc.)
- ▶ Two optical displays (green & red LEDs) to confirm commands and to show the battery warning status
- ▶ Emergency opening option with external emergency power tool (low power adapter)
- ▶ Bolt lengths from 35 mm. Applications should be checked on case-by-case basis
- ▶ Fits all standard profile cylinder doors in compliance with DIN 18252
- ▶ Battery working life approx. 2 years at 20 operations per day
- ▶ Access rights are administered in the host system
- ▶ Reaction time, typically 1 sec.
- ▶ Acoustic signal to confirm door release
- ▶ Half-cylinder applications are also possible
- ▶ Suitable for use on fire and escape doors

Technical data

Dimensions	Cylinder dimensions for Euro profile locks in accordance with DIN 18252	
Housing	Cylinder and knob housing	Brass, surface nickel-plated
	Front element	Hard plastic
Electronic knob module	Knob length	42.7 mm
	Ø knob	40 mm
Mechanical knob	Knob length	20 mm
	Ø knob	29.5 mm
Protection class	IP65	
Read technologies	MIFARE® DESFire® EV1 or LEGIC advant®	
Read distances	MIFARE® DESFire® EV1	Key fobs / cards, typically < 5 mm
	LEGIC advant®	Key fobs / cards typically 10 mm
Batteries	2 x CR2 3 V Lithium	
Low power opening	Always possible with external power source	
Installation site	Intended for interior deployment	

The device fulfils the specifications of DIN EN 60721-3-3:1995/A2:1997, Class 3K3,3Z11 (interior).

Ordering information

Knob module – pKT knob module, with light ring, 128 KB Flash (interior installation)

I171-00104.02	LEGIC advant®, with logo
I172-00104.02	MIFARE® DESFire® EV1, with logo

Mechanical inside knob for cylinder adapter

Z220-004.01	Ø 29.5 mm
Z220-004.02	Ø 34 mm

Accessories

Z220-002.02	Battery change tool
Z220-012.01	Disassembly tool for emergency power contacts
Z220-013.02	Low power adapter for knob module
Z220-001.01	Wireless adapter with diagnostics / programming unit (incl. USB interface) for technicians
Z220-005.01	Protective security rosette
	- Preventive measure for higher security requirements
	- Cannot be removed from outside
Z071-040.01	Battery set for pKT Digital cylinder, 2 x CR2 3 V
H14108-0002.01	pKT Padlock, shackle height 51 mm, with integrated half-cylinder (without knob module)
H14108-0003.01	pKT Padlock, shackle height 31 mm, with integrated half-cylinder (without knob module)
H12108-0004.01	Cabinet Lock adapter 7 mm for doors 13-20 mm

G3 / G4 half-cylinder adapters

	Measurement A (mm)	Measurement B (mm)	Overall length (mm)
Z221-056.01	30	10	40
Z221-057.01	35	10	45
Z221-058.01	40	10	50
Z221-059.01	45	10	55

See next page for further measurements

Ordering information

G3 / G4 cylinder adapters

	Measurement		Overall length in mm
	A in mm	B in mm	
Z221-001.01	26	26	52
Z221-002.01	26	30	56
Z221-003.01	26	35	61
Z221-004.01	26	40	66
Z221-005.01	26	45	71
Z221-006.01	26	50	76
Z221-007.01	26	55	81
Z221-008.01	26	60	86
Z221-009.01	26	65	91
Z221-010.01	26	70	96
Z221-011.01	30	30	60
Z221-012.01	30	35	65
Z221-013.01	30	40	70
Z221-014.01	30	45	75
Z221-015.01	30	50	80
Z221-016.01	30	55	85
Z221-017.01	30	60	90
Z221-018.01	30	65	95
Z221-019.01	30	70	100
Z221-020.01	35	35	70
Z221-021.01	35	40	75
Z221-022.01	35	45	80
Z221-023.01	35	50	85
Z221-024.01	35	55	90
Z221-025.01	35	60	95
Z221-026.01	35	65	100
Z221-027.01	35	70	105
Z221-028.01	40	40	80
Z221-029.01	40	45	85
Z221-030.01	40	50	90
Z221-031.01	40	55	95
Z221-032.01	40	60	100
Z221-033.01	40	65	105
Z221-034.01	40	70	110
Z221-035.01	45	45	90
Z221-036.01	45	50	95
Z221-037.01	45	55	100
Z221-038.01	45	60	105
Z221-039.01	45	65	110
Z221-040.01	45	70	115
Z221-041.01	50	50	100
Z221-042.01	50	55	105
Z221-043.01	50	60	110
Z221-044.01	50	65	115
Z221-045.01	50	70	120
Z221-046.01	55	55	110
Z221-047.01	55	60	115
Z221-048.01	55	65	120
Z221-049.01	55	70	125
Z221-050.01	60	60	120
Z221-051.01	60	65	125
Z221-052.01	60	70	130
Z221-053.01	65	65	130
Z221-054.01	65	70	135
Z221-055.01	70	70	140

G3 / G4 anti-panic cylinders

	Measurement		Overall length in mm
	A in mm	B in mm	
Z221-500.01	30	30	60
Z221-501.01	30	35	65
Z221-502.01	30	40	70
Z221-503.01	30	45	75
Z221-504.01	30	50	80
Z221-505.01	35	30	65
Z221-506.01	35	35	70
Z221-507.01	35	40	75
Z221-508.01	35	45	80
Z221-509.01	35	50	85
Z221-510.01	40	30	70
Z221-511.01	40	35	75
Z221-512.01	40	40	80
Z221-513.01	40	45	85
Z221-514.01	40	50	90
Z221-515.01	45	30	75
Z221-516.01	45	35	80
Z221-517.01	45	40	85
Z221-518.01	45	45	90
Z221-519.01	45	50	95
Z221-520.01	50	30	80
Z221-521.01	50	35	85
Z221-522.01	50	40	90
Z221-523.01	50	45	95
Z221-524.01	50	50	100
Z221-526.01	55	55	110
Z221-527.01	60	30	90
Z221-528.01	55	40	95
Z221-529.01	30	55	85
Z221-530.01	55	30	85
Z221-531.01	30	70	100
Z221-533.01	40	65	105
Z221-534.01	45	55	100
Z221-535.01	40	55	95
Z221-536.01	45	80	125
Z221-537.01	50	75	125
Z221-538.01	60	65	125
Z221-540.01	60	35	95
Z221-541.01	50	55	105
Z221-542.01	65	60	125
Z221-543.01	35	65	100
Z221-544.01	65	35	100 ¹⁾
Z221-545.01	80	45	125 ¹⁾
Z221-556.01	30	40	70 ²⁾
Z221-557.01	40	30	70 ²⁾
Z221-559.01	35	75	110
Z221-562.01	55	35	90
Z221-569.01	55	45	100 ³⁾
Z221-570.01	60	60	120 ³⁾
Z221-571.01	35	90	125 ³⁾
Z221-572.01	35	90	125 ³⁾⁴⁾
Z221-573.01	50	90	140 ³⁾⁴⁾
Z221-576.01	35	55	90

1) Panic function interior knob
2) Digital cylinder, brass

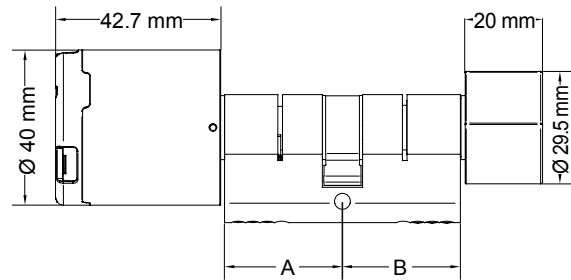
3) Cylinder adapter, special length 35
4) B not fixed-installed

Ordering example:

pKT Digital cylinder G3, MIFARE® DESFire®



Electronic knob module I172-00104.01	Measurement A in mm 30	Measurement B in mm 40	Mechanical interior knob Z220-004.01
	Reversible cylinder adapter Z221-013.01		



Cylinder adapter length calculation

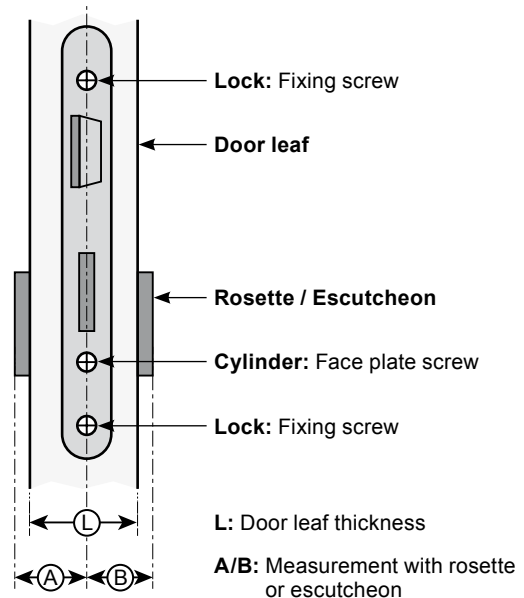
- ▶ Measurement A = Exterior / electronic knob module
- ▶ Measurement B = Interior / mechanical knob module

Note:

- ▶ The measurement goes from the middle of the faceplate screw to the outer edge of the rosette or escutcheon.
 - ▶ A panic lock and a panic cylinder adapter must be installed in the case of installation on a door with panic function (escape door). The mechanical interior knob is already fixed-mounted to the panic cylinder adapter.
- Important ordering information: Measurement B = Interior knob (See previous page for part number)

Please note:

If a pKT knob module is to be installed on both sides, the minimum overall length has to be at least 70 mm.



! Safety advice
In order to guarantee increased security, a security rosette should be installed if the locking cylinder protrudes from the surface of the door.

! Safety advice
In order to avoid the possibility of hand injuries when opening and closing the door and to increase the user comfort, there should be a safety distance between the handle and the door frame. This must be at least 25 mm, to comply with GUV-V SI*.

* GUV: German accident insurance health & safety regulations

! Safety advice
When the cylinder is operated in combination with an anti-panic lock, it must be guaranteed that at every position, the cylinder lock catch can be opened safely and/or is not damaged.
Measurements A and B cannot be swapped. (See previous page for measurements and part numbers)