



Protection for people and animals

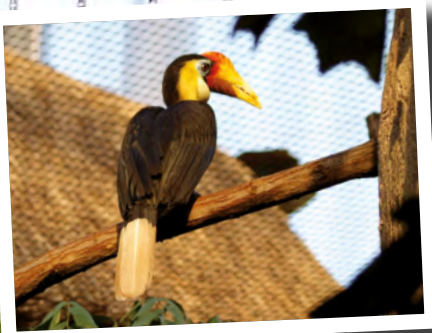
Between Komodo dragons and giant trees

More than 17,000 tropical plants, around 300 exotic animals and an unspoilt rain forest like those found in the ancient continent of Gondwana – that is the 16,500 m² Gondwanaland at Leipzig Zoo that was opened in July 2011. The total costs for this unique animal and tropical paradise came to 66.8 million Euro.

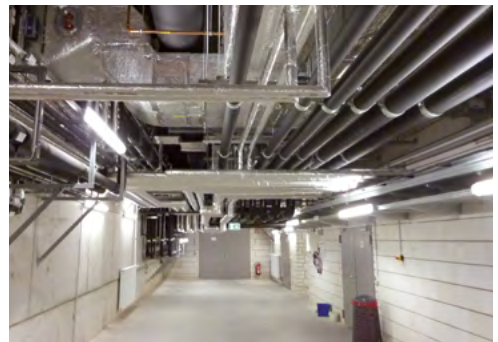
At Leipzig Zoo, they have been relying on primion's prime Web system for Time recording and Access control since 2001. Now, as part of the system expansion, Gondwanaland, Europe's largest tropical hall, has been equipped with software and hardware from primion.

The architecturally exceptional construction with its cantilevered roof is the result of a European-wide architectural competition. Construction took some four years. 40 different types of animal populate the sub-tropical hall, which, together with vegetation from around the world that was brought to Leipzig using special transporters, give it its unique character. The vegetation includes giant trees some 12 meters tall. Since its opening, Gondwanaland has proved to be an attraction for thousands of visitors.

primion's task was to create a clear separation between the public areas and the service areas and media rooms, through a user-friendly software and hardware. The only live Komodo dragon in Germany for example, would be delighted by a visit from a child; the parents and zoo staff however, would certainly not be.



Gondwanaland at Leipzig Zoo offer breathtaking views, which conceal some sophisticated technology. Thought was also given to making sure that the primion readers fitted into the existing architecture during the building phase (below left).



“This was one of the most unusual projects undertaken by primion in recent time.

We are reminded of this each time we visit Gondwanaland – which is certainly worth doing – and we are delighted by the fact that we were able to make a contribution to the protection of this unique animal and plant world.”

Project manager Nicole Simon

primion was included in the planning of the unusual new build project from the start and it soon became clear that an electronic Access control system offered many advantages. A digital locking system had also been considered as an option.

Those responsible for the project were convinced about the suitability of the primion prime WebAccess software thanks to the speedy reaction times offered by the electronic system and the monitoring of the permanent power supply through status messages.

Access readers were installed at 30 doors, some of them in a special colour so that visually, they fitted well into the tropical environment. The latest read technologies guarantee the highest levels of security. And all of this at an average temperature of 20°C and humidity levels between 65% and 100%, which proved to be a new challenge for the primion technicians.

A further criterion for the customer, Zoo Leipzig GmbH, was that there should be permanent monitoring of the status of the doors. A complete overview had to be guaranteed at all times. Are all doors closed? Which door is open? Going forward, all doors, including those without any electronic Access control will be visualised through a display panel.

As part of the project, the existing prime WebTime application for Time recording was also updated. And the data transfer to the wages and salary program SAGE KHK Classic Line was also implemented, as requested. One special feature that the Leipzig Zoo also requested, was a guarantee of compliance with the

Hazardous Incident Ordinance. The requirement for the automatic booking of the start and end of the working time was also implemented.

This means for the 200 or so employees at the zoo that in practice, they only have to present their badge or their key fob to an Access control readers at one of the doors to gain access to the building. Badges and key fobs are also used for Time recording through separate reader modules mounted on door posts or in the changing rooms. Here too, the employees have to present their badge or chip to the device when they start and when they finish work.

Application

- › Time recording and Access control system with MS SQL database
- › Interface to SAGE KHK
- › 600 employees

Version

- › prime WebTime, prime WebAccess
- › 19 Access control readers + 11 in the zoo premises
- › 3 IDT 32 Access control panels,
3 IDT6 Access control panels
- › 4 DT800 Time recording terminals
- › 1 Display panel
- › 450 Cards / Key fobs

Special features

- › Interface to SAGE KHK with parallel data transfer to the PAISY system at the City of Leipzig